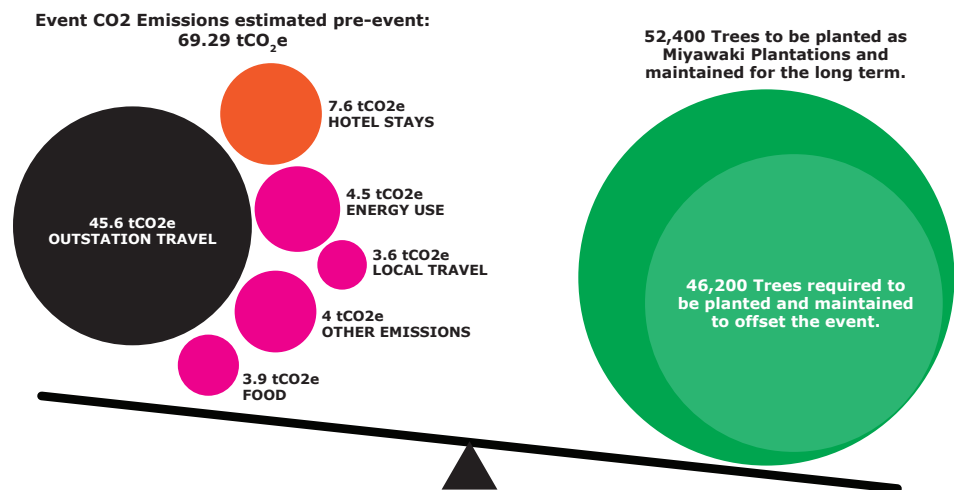


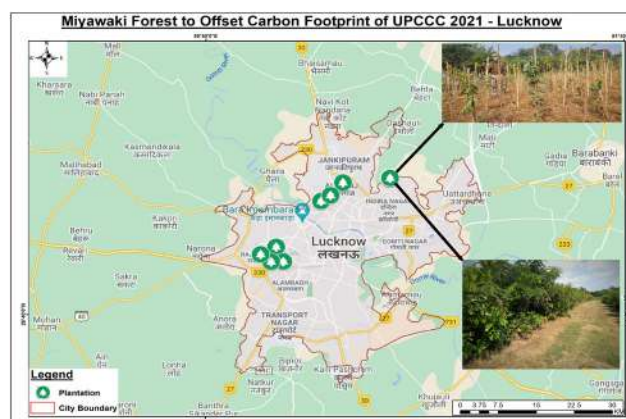
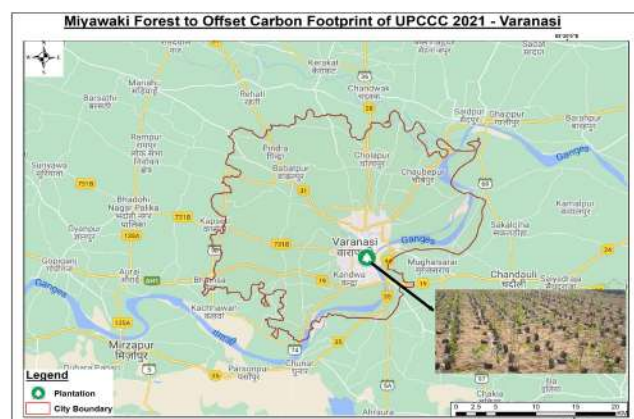
Event Carbon Emissions Summary



Estimated emissions from the event compared to the number of trees required to be planted and maintained.

U.P. CLIMATE CHANGE CONCLAVE

28th & 29th October 2021



Locations of the Miyawaki Plantations



Event Carbon Footprint

PRE-EVENT EMISSIONS CALCULATION



Scan the QR Code for a detailed look.

#calltoaction for Participants

We urge all participants to make emissions reductions actionable wherever possible. Here are a few suggestions to reduce your own footprint during the course of the event.

1. Save Energy! Switch off electrical equipment when not in use.
2. Reduce Fuel Consumption! Try to carpool between venues.
3. Reduce Waste! Watch your consumption and generation of waste.

Prepared by:



VNV ADVISORY SERVICES:

Developers of High-Quality & High Social-Impact Carbon Credit Projects

www.vnvadvisory.com

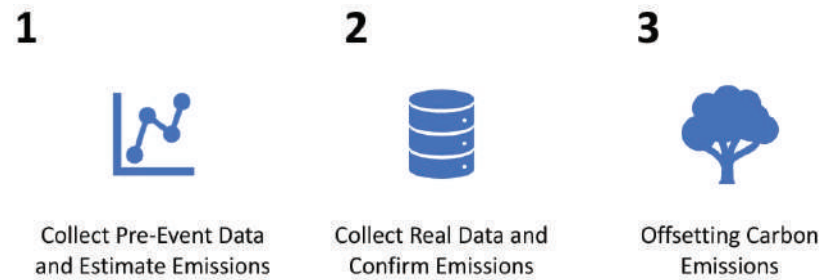


Implemented by



Methodology

An event can contribute to emissions through use of space and purchased services. In addition, associated emissions from travel and hotel stays can become significant. This event takes these emissions into account.



Event Carbon Offset Methodology

Assumptions

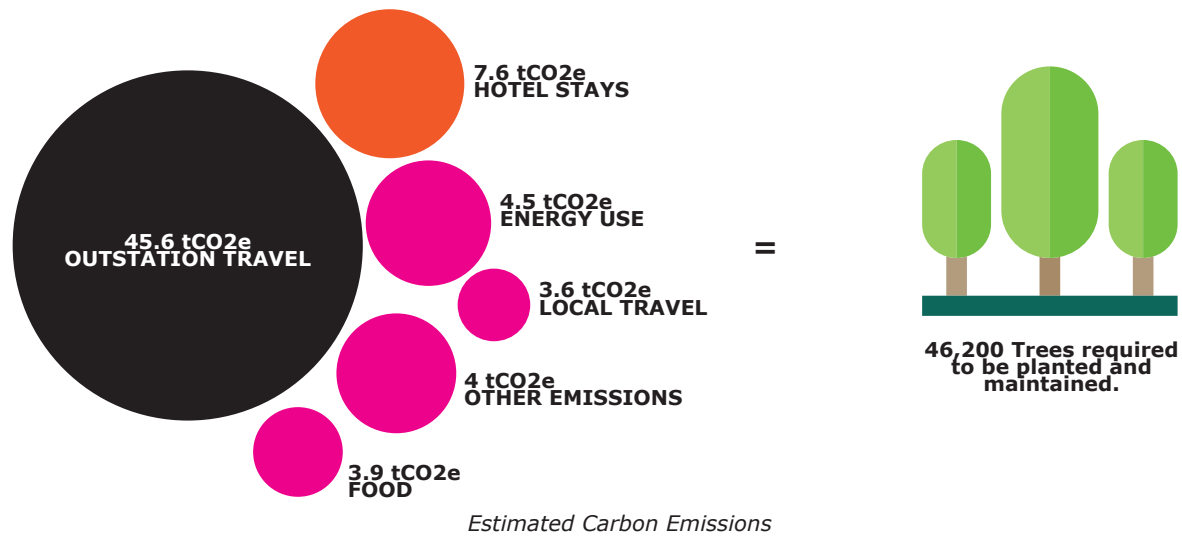
Estimations for pre-event emissions calculations included air-travel, local travel using cars and taxis, food consumption, electricity use, water use and waste generation. A staff of 60 persons operating locally was also incorporated in the calculations.

For a detailed calculation, please refer to the QR Code present on the cover page of this brochure.

Emissions

The total amount of CO₂ emissions from this event were estimated to be 69.29 tCO₂e.

Major sources of emission have been represented blow:



Estimated Carbon Emissions

Offsetting the emissions

In order to take responsibility for 69.29 tons of CO₂ emissions (based on pre-event estimations), an estimated 46,200 trees need to be planted and maintained for the long term. The Carbon Neutrality claim will be validated upon the successful certification of the project under a carbon credits mechanism. Post-Event calculations will be available after the event as an online document on the QR code link provided.

The Miyawaki Technique

Miyawaki technique is a panacea for urban woes.

These forests have thirty times more trees than other plantations and are perfect for cities, where land is scarce. They help lower temperatures in concrete heat islands, reduce air and noise pollution, attract local birds and insects, and create carbon sinks. The method advocates the planting of diverse native species, thereby bringing in more biodiversity in comparison to monoclonal plantations. These forests are found to have up to 30 times better noise and dust reduction along with 30 times better Carbon-dioxide absorption as compared to a monoculture plantation. They are completely maintenance-free, chemical and chemical fertilizer free, wild and native forest that grows in two to three years and become self-sustaining.

Government of Uttar Pradesh has developed Standard Operating Procedure (SOP) for development of Miyawaki Forests. Several Miyawaki Forests have been developed across the State, and the Government has made development of Miyawaki Forest in industrial units mandatory.

The Plantations

The Miyawaki technique of plantation was selected and a total number of 52,400 trees have been planted and will be maintained at 11 locations in Lucknow and Varanasi, covering a total area of 1.62 hectares.

The details of the plantations, their locations and number of saplings planted have been listed below:

S. No.	Name of Site	District	Area (ha.)	No. of Seedlings	Latitude dd mm ss	Longitude dd mm ss
1	Chandan Forest Block-1	Lucknow	0.44	15400	N 26° 54' 32.9"	E 80° 59' 36.5"
2	Chandan Forest Block-2	Lucknow	0.24	8400	N 26° 54' 30.5"	E 80° 59' 35.8"
3	Chandan Forest Block-2	Lucknow	0.18	6300	N 26° 54' 30.9"	E 80° 59' 37.8"
4	Public Park, F Block, Rajaji Puram	Lucknow	0.02	700	N 26° 50' 50.50406"	E 80° 53' 18.49092"
5	Talkatora Industrial Area Park	Lucknow	0.02	700	N 26° 50' 3.72818"	E 80° 53' 41.5446"
6	Alam Nagar, Rajajipuram Underpass Green Belt	Lucknow	0.01	350	N 26° 50' 3.0804"	E 80° 53' 1.4964"
7	Triveni Nagar Park	Lucknow	0.04	1400	N 26° 53' 17.2068"	E 80° 55' 47.91"
8	Sector D Park, Aliganj	Lucknow	0.06	2100	N 26° 53' 35.679"	E 80° 56' 19.449"
9	Sector O Park, Aliganj	Lucknow	0.09	3150	N 26° 54' 16.758"	E 80° 57' 0.435"
10	Mehedikhera Park, Rajajipuram	Lucknow	0.02	700	N 26° 50' 27.0276"	E 80° 52' 26.418"
11	Shiksha Sankaya, Banaras Hindu Vishvavidyalaya	Varanasi	0.5	15000	N 25° 17' 57"	E 82° 59' 45"
Total			1.62	54200		

Locations of the Miyawaki Plantations



Miyawaki Plantations in Lucknow



Miyawaki Plantation in Varanasi